

ANALYSIS OF STUDENT PLACEMENT
UNIFIED ENROLLMENT SYSTEM (ONEAPP)
ORLEANS PARISH



PERFORMANCE AUDIT SERVICES
ISSUED AUGUST 14, 2018

**LOUISIANA LEGISLATIVE AUDITOR
1600 NORTH THIRD STREET
POST OFFICE BOX 94397
BATON ROUGE, LOUISIANA 70804-9397**

LEGISLATIVE AUDITOR
DARYL G. PURPERA, CPA, CFE

ASSISTANT LEGISLATIVE AUDITOR
FOR STATE AUDIT SERVICES
NICOLE B. EDMONSON, CIA, CGAP, MPA

DIRECTOR OF PERFORMANCE AUDIT SERVICES
KAREN LEBLANC, CIA, CGAP, MSW

**FOR QUESTIONS RELATED TO THIS PERFORMANCE AUDIT, CONTACT
GINA V. BROWN, PERFORMANCE AUDIT MANAGER,
AT 225-339-3800.**

Under the provisions of state law, this report is a public document. A copy of this report has been submitted to the Governor, to the Attorney General, and to other public officials as required by state law. A copy of this report is available for public inspection at the Baton Rouge office of the Louisiana Legislative Auditor.

This document is produced by the Louisiana Legislative Auditor, State of Louisiana, Post Office Box 94397, Baton Rouge, Louisiana 70804-9397 in accordance with Louisiana Revised Statute 24:513. Eight copies of this public document were produced at an approximate cost of \$6.40. This material was produced in accordance with the standards for state agencies established pursuant to R.S. 43:31. This report is available on the Legislative Auditor's website at www.la.gov. When contacting the office, you may refer to Agency ID No. 9726 or Report ID No. 40180010 for additional information.

In compliance with the Americans With Disabilities Act, if you need special assistance relative to this document, or any documents of the Legislative Auditor, please contact Elizabeth Coxe, Chief Administrative Officer, at 225-339-3800.



LOUISIANA LEGISLATIVE AUDITOR
DARYL G. PURPERA, CPA, CFE

August 14, 2018

The Honorable John A. Alario, Jr.,
President of the Senate
The Honorable Taylor F. Barras
Speaker of the House of Representatives

Dear Senator Alario and Representative Barras:

This report provides the results of our analysis of the placement of students participating in the unified enrollment system (OneApp) in Orleans Parish. I hope this report will benefit you in your legislative decision-making process.

We would like to express our appreciation to the management and staff of the Louisiana Department of Education and the Orleans Parish School Board for their assistance during this review.

Respectfully submitted,

Thomas H. Cole, CPA
First Assistant Legislative Auditor

THC/aa

ONEAPP

Louisiana Legislative Auditor

Daryl G. Purpera, CPA, CFE



Analysis of Student Placement, Unified Enrollment System (OneApp), Orleans Parish

August 2018

Audit Control # 40180010

Summary

We analyzed the placement of students participating in the unified enrollment system (OneApp) in Orleans Parish. La. Admin. Code. tit. 28, pt CXXXIX, § 2709 (L) (2018) requires Board of Elementary and Secondary Education (BESE)-authorized charter schools (type 2, type 4, and type 5) physically located in Orleans Parish to participate in OneApp.¹ OneApp was established by the Recovery School District (RSD) and is administered by EnrollNOLA. EnrollNOLA was established in 2011 and is a partnership between the Orleans Parish School Board and RSD to provide students and families the opportunity to choose a school that suits their interest and needs. According to the EnrollNOLA's website,² EnrollNOLA was established in response to continued calls for greater accountability for an equitable enrollment system for New Orleans public schools.

What is OneApp?

OneApp uses an algorithm that assigns students to schools based on families' preferences (up to 12 schools), schools' enrollment criteria and priorities, such as geography and sibling priority, and seat availability.

The algorithm takes into account enrollment criteria first, and then whether the student has a priority, such as a sibling at the school, and then the student's randomly assigned lottery number, to fill the available seats at a school.

In 2012, RSD became one of the first U.S. districts to unify charter and traditional public school admissions into a single application, which is referred to as OneApp. OneApp offers students the opportunity to apply to all participating schools using one application. Families who live in Orleans Parish with students in grades kindergarten through twelfth may apply to up to 12 participating schools of their choice, anywhere across the city. Families applying for early childhood education programs also use OneApp, but these programs were not included in our analysis. As required by Act 91 of the 2016 regular session, on July 1, 2018, the Louisiana Department of Education (LDE) transferred the entire administration of OneApp to the Orleans Parish School system when all RSD schools transferred under the jurisdiction of the Orleans Parish School system.

OneApp currently manages admissions for 84 (94.4%) of 89 New Orleans public schools where 92% (43,866 of 47,454)³ of public school students attended during the 2017-2018 school year. The 84 schools include 76 of the 80 schools from the Orleans Parish School System and eight Type 2 charter schools authorized by BESE. The remaining school that does not use the OneApp system is a statewide school (New Orleans Center for Creative Arts).

¹ This requirement was added in 2012.

² <https://enrollnola.org/about/enrollnola-oneapp/>

³ This total does not include students who attended a private school through the Louisiana Scholarship Program.

The objective of this review was:

To analyze the placement of students participating in the unified enrollment system (OneApp) in Orleans Parish.

Our analysis is discussed in detail throughout the remainder of the report. Appendix A contains our scope and methodology, and Appendices B (kindergarten) and C (ninth grade) provide a summary of all Orleans area schools participating in OneApp and their enrollment statistics for the 2018-2019 academic year. Our analysis and the appendices are based on first-round OneApp results for this time period. There is a second round for applicants who did not get into one of their preferred schools during the first round; however, second-round data were not included in our analysis.

Objective: To analyze the placement of students participating in the unified enrollment system (OneApp) in Orleans Parish.

For academic year 2018-2019, 10,749 students in grades K-12 submitted a OneApp application out of a total of 49,195 students.⁴ We used OneApp data to analyze the placement of students for academic years 2014-2015 through 2018-2019 and found the following:

- **Overall, 7,038 (65.5%) of 10,749 applicants received one of their *top three* preferred schools for the upcoming 2018-2019 academic year during the first round.** This includes 5,599 (74.3%) of 7,537 new applicants and 1,439 (44.8%) of 3,212 students who requested to transfer schools. In addition, 4,817 (44.8%) of the 10,749 applicants received their *first* choice. However, the percentage of applicants receiving one of their top three preferences in the first round decreased overall by 15.8%, from 77.7% to 65.5% between academic years 2014-2015 and 2018-2019, and the percentage of students receiving their first choice in the first round decreased by 22.8%, from 58.0% to 44.8% over this same time period.
- **A school's enrollment criteria and priorities, such as geographic and sibling priority, may impact whether a student receives one of their top three preferred choices.** We found that for the highest demand schools (usually the highest performing schools), the number of students being admitted without a priority is significantly less, especially for kindergarten, than students admitted with a priority. For example, the highest demand school for kindergarten, was Edward Hynes Charter School. However, once students with a priority were admitted, there were only 10 (out of 69) spaces remaining for students who did not have a priority.
- **Overall, 1,242 (16.5%) of 7,537 new applicants were not placed at all during the first round for the 2018-2019 academic year.** Of these 1,242 students, 1,235 (99.4%) did not list the maximum number of allowed schools on their application, instead listing only an average of 2.4 schools (out of a potential 12) that they were eligible to attend. According to LDE, applicants can maximize their chances of being admitted into a school during the first round by listing as many schools as allowed on their application.

⁴ This number includes 7,537 new applicants, 3,212 returning students who submitted transfer applications, and 38,446 returning students who did not submit transfer applications.

- **The majority (53.8%) of students attending a public school in Orleans Parish for the 2018-2019 academic year will travel outside of their geographic zone.** We found that 21,060 (46.2%) of 45,574 of students live in the same zone as their school and 24,514 (53.8%) live outside of their school's geographic zone based on first round OneApp results for the upcoming year. However, according to LDE, 50% of all first choices were for schools that were outside of the applicant's zone of residence and two-thirds of choices on all applications were for out-of-zone schools.

Our results are discussed in more detail on the following pages.

Overall, 7,038 (65.5%) of 10,749 applicants received one of their *top three* preferred schools for the upcoming 2018-2019 academic year during the first round. In addition, 4,817 (44.8%) students submitting new applications received their *first choice*.

We found that 7,038 (65.5%) of 10,749 applicants received one of their *top three* preferred schools through OneApp for the upcoming 2018-2019 academic year. This percentage was highest for ninth-grade students, where 2,707 (83.7%) of 3,234 students were placed at one of their top three most preferred schools, and lowest for fifth grade, where 215 (36.2%) of 594 students received a top three placement. According to LDE, kindergarten and ninth grade are transitional grades and have the greatest number of available seats, while a school will have minimal seats open in all other grade levels.

Specifically, 5,599 (74.3%) of 7,537 new applicants received one of their top three preferred schools and 1,439 (44.8%) of 3,212 students who submitted applications for transfer received one of their top three preferences. This excludes the transfer applicants who were automatically reaccepted into the school they previously attended because they were not admitted to any of the schools to which they applied. For new applicants, this percentage was highest for new students in the ninth grade, where 2,650 (84.3%) of 3,142 students were placed at one of their top three most preferred schools, and lowest in the fifth grade, where 120 (46.3%) of 259 new students received a top three placement. For transfer students, this percentage was highest in kindergarten, where 167 (72.9%) of 229 transfer students were accepted into one of their top three transfer choices and lowest in the fifth grade at 95 (28.4%) of 335. Exhibit 1 shows the percentage of new and transfer applicants who were admitted to one of their top three preferred schools by grade level for the 2018-2019 academic year.

Transfer applicants are already enrolled in a school, but want to transfer schools. These students complete the OneApp by selecting schools they prefer over their current school. These students are guaranteed a seat at their current school if they are not accepted to one of their other choices. We found transfer applicants tend to apply to fewer schools than new applicants – averaging 2.8 in academic year 2018-2019 compared to 4.5 for new applicants.

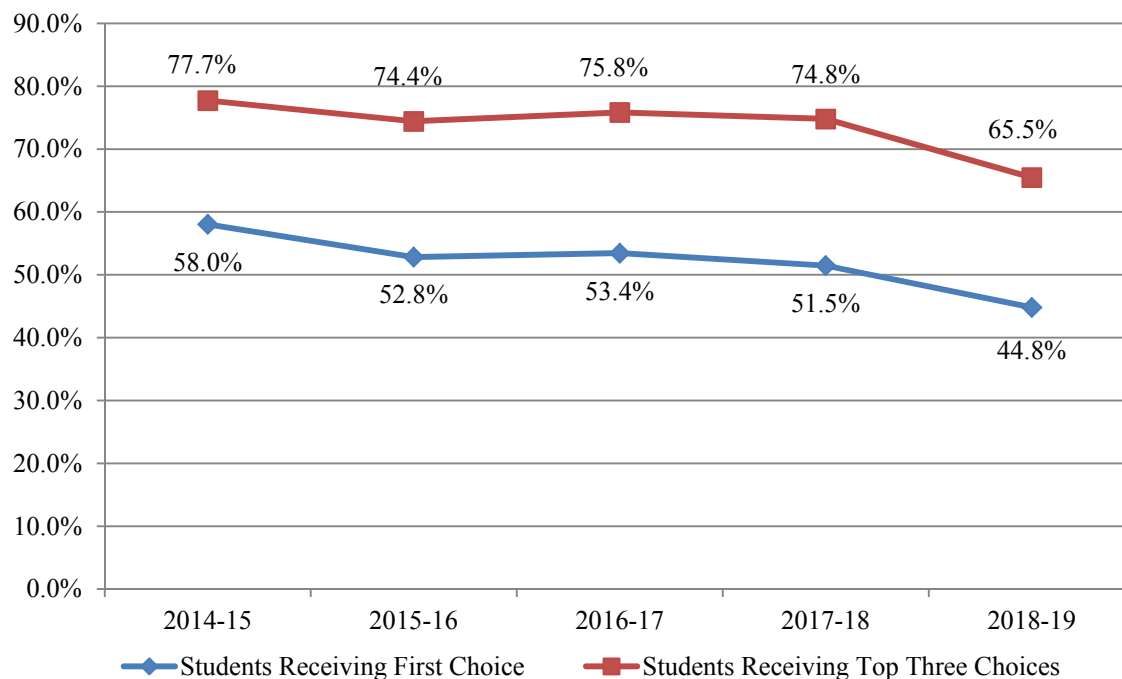
Exhibit 1 Percentage of Applicants Admitted to One of Their Top Three Preferred Schools 2018-2019 Academic Year *		
Grade	Received School Choice 1-3	
	New Applicants	Transfer Applicants
K	78.9%	72.9%
1	60.9%	51.4%
2	59.6%	45.7%
3	53.4%	40.3%
4	55.6%	39.0%
5	46.3%	28.4%
6	54.1%	30.0%
7	48.7%	33.6%
8	66.8%	40.6%
9	84.3%	62.0%
10	56.1%	54.4%
11	64.4%	61.0%
12	57.9%	41.6%
All Grades	74.3%	44.8%

*After Round One.
Source: Prepared by legislative auditor's staff using data obtained from the OneApp system.

In addition, we found that 4,817 (44.8%) of the 10,749 applicants received their first choice during the first round of the OneApp enrollment process. This percent was highest in kindergarten, where 1,494 (63.9%) of 2,339 applicants received their first choice school and lowest in seventh grade, where only 94 (20.6%) of 456 applicants were placed in their first choice school.

The percentage of applicants placed in one of their *top three* preferred schools through OneApp in the first round decreased overall during the past five academic years by 15.8%. The percentage of applicants receiving their *first* choice in the first round decreased by 22.8% over this same time period. The percentage of applicants receiving one of their top three preferred schools for the 2014-2015 academic year was 77.7% compared to 65.5% for the 2018-2019 academic year, for a percentage decrease of 15.8% overall. In addition, the percentage of applicants receiving their top choice decreased from 58.0% to 44.8%, for a percentage decrease of 22.8% overall during this same time period. Exhibit 2 shows the percentage of applicants who received their first school choice and the percentage of applicants who received one of their top three choices.

Exhibit 2
OneApp Acceptance Percentage
Academic Years 2014-2015 through 2018-2019



Source: Prepared by legislative auditor's staff using data obtained from the OneApp system.

According to LDE, this decrease is attributed to a number of factors including increased participation over time and high demand schools starting to use the OneApp enrollment system. LDE emphasized that the highest demand schools in OneApp often receive significantly more applications than they can accommodate. For example, the school that received the most applications of any elementary school, Edward Hynes Charter School, which is an A rated school, joined the OneApp system beginning in the 2018-2019 academic year.

A school's enrollment criteria and priorities, such as geographic and sibling priority, may impact whether a student receives one of their top three preferred choices.

We found that for the highest demand schools (usually the highest performing schools), the number of students being admitted without a priority is significantly less, especially for kindergarten, than students admitted with a priority. The OneApp algorithm first takes into account enrollment criteria and a school's priorities to fill the available seats at that school. To demonstrate how priorities can impact admissions, we summarized the top five schools that applicants listed as a preference. We then calculated the percent of students admitted with a priority compared to those admitted without a priority. For example, the highest demand school for kindergarten was Edward Hynes Charter School. However, once students with a priority were admitted, there were only 10 (out of 69) spaces remaining for students who did not have a

priority. Exhibit 3 summarizes enrollment statistics for the top five schools for kindergarten and ninth grade.

Exhibit 3 Top 5 Schools' Enrollment Statistics (By Number of First Choice Applications) 2018-2019 Academic Year						
School Name (Letter Grade)	Eligible Students who Listed School as a Preference	New Student Capacity*	Students Admitted with a Priority	% of Students Accepted with Priority	Students Admitted with <u>No</u> Priority	% of Students Admitted with <u>No</u> Priority
Kindergarten						
1. Edward Hynes Charter School (A)	1,065	69	59	85.5%	10	14.5%
– <i>Edward Hynes Charter School</i>	757	54	48	88.9%	6	11.1%
– <i>Edward Hynes French Immersion</i>	308	15	11	73.3%	4	26.7%
2. International School of Louisiana: Eagle & Camp Street Campuses (A)	764	150	92	61.3%	58	38.7%
– <i>Eagle Street Campus (Spanish)</i>	424	75	65	86.7%	10	13.3%
– <i>Eagle Street Campus (French)</i>	340	75	27	36.0%	48	64.0%
3. Benjamin Franklin Elementary Mathematics and Science School (B)	650	68	41	60.3%	23	33.8%
– <i>Mathematics and Science School</i>	642	64	41	64.1%	23	35.9%
– <i>Mathematics and Science School (Gifted and Talented)</i>	8	4	0	0.0%	0	0.0%
4. Bricolage Academy (B)	577	90	74	82.2%	16	17.8%
5. Audubon Gentilly (No Grade-New School)	484	45	22	48.9%	23	51.1%
Ninth Grade						
1. Warren Easton High School (A)	3,028	266	105	39.5%	161	60.5%
– <i>High School</i>	2,286	185	97	52.4%	88	47.6%
– <i>Focus Program: Engineering, Law, Health, Sciences</i>	742	81	8	9.9%	73	90.1%
2. Edna Karr High School (A)	2,030	285	222	77.9%	63	22.1%
3. Eleanor McMain Secondary School (C)	1,290	232	48	20.7%	184	79.3%
4. KIPP Renaissance High School (B)	961	203	158	77.8%	45	22.2%
5. CA: Abramson Sci Academy (C)	856	175	32	18.3%	143	81.7%
*Seats available after accounting for returning students.						
Source: Prepared by legislative auditor's staff using data obtained from the OneApp system.						

State law [R.S. 17:3991(B)] and [R.S. 17:3991(C)] guides when schools can use sibling priority, geographic priority, and the economically disadvantaged priority. BESE and Orleans Parish School Board policies guide when the other priorities are used. Ultimately, the authorizer (BESE, Orleans Parish School Board, etc.) approves the priority structure for each school. Exhibit 4 summarizes the different priorities and enrollment criteria, and the number of schools that use each.

Exhibit 4
Summary of School Priorities and Enrollment Criteria
2018-2019 Academic Year

Priority/Criteria	Description	Number of Schools
Sibling priority	This is the most common priority at OneApp schools. If an applicant has a sibling already attending the school they are applying to, they will most likely be admitted to the school. According to LDE, this is particularly true in kindergarten and ninth grade, where 100% of identified sibling-applicants were assigned with their older sibling. In all other grades, 65% of identified sibling-applicants were assigned with their sibling.	82 (97.6%) of the 84 schools used sibling priority, and it is the number one priority at 28 of these schools for 2018-2019 academic year. The two schools that did not use sibling priority did not accept new students for the upcoming year.
Geographic priority	If an applicant lives in the same geographic area of the school of their choice, they have a greater chance of being admitted to the school.	55 (65.5%) of the 84 schools prioritize geographic preference. However, this priority is limited to a percentage of spots available, typically 50%. Geography is a lower priority than siblings of current students.
School closure priority	If an applicant is attending a school that is closing, they will receive the highest priority, even above students with sibling and geographic priorities.	54 (64.3%) of the 84 schools gave priority to an applicant transferring from a closing school for the 2018-2019 academic year. This number varies by year, because all applicants transferring from a closing school receive the highest priority at any school to which they apply.
Economically disadvantaged priority	If an applicant is identified as economically disadvantaged, the charter schools <i>may</i> give them a preference during admissions.	Four (4.8%) of the 84 schools take into consideration of the economic status of an applicant's family (one school for all grades and three schools for kindergarten only).
Feeder school priority	Applicants <i>may</i> be prioritized if they currently attend a feeder elementary school for the school to which they are applying for middle or high school.	Nine (10.7%) of the 84 schools give a higher priority to an applicant if they are coming from a feeder school. For example, ninth grade students applying for admission to KIPP Renaissance High School are prioritized if they attended a KIPP network school in the eighth grade.
Individualized Education Program priority	An applicant <i>may</i> receive priority at a school if they have an Individualized Education Program (IEP). IEPs are done for students who need to receive special education services.	Five (6.0%) of the 84 schools use the IEP priority (3 for kindergarten, one for eighth grade, one for ninth grade).
Enrollment criteria	An applicant <i>may</i> be required to have foreign language proficiency for admission to an immersion school and parents may be required to attend an open house or other informational meeting. One school has a program that requires students to pass an academic admissions exam.	At least four charter schools use some combination of these requirements.

Source: Prepared by legislative auditor's staff using data obtained from the OneApp system.

Overall, 1,242 (16.5%) of 7,537 new applicants were not placed at all during the first round for the 2018-2019 academic year.

Overall, 1,242 (16.5%) of the 7,537 kindergarten through twelfth-grade students who submitted new applications during the first round of the OneApp for the 2018-2019 academic year did not receive placement at any of the schools they listed on their applications. Of these, most (1,235 or 99.4%) did not list the maximum number of allowed schools (12) on their application; instead, listing an average of only 2.4 schools that they were eligible to attend. The remaining eight students (0.6%) did list the maximum number of school choices allowed on their applications. However, all eight had listed at least one school on their application that they were not eligible to attend. For example, private schools located in the New Orleans area who participate in the Louisiana Scholarship Program also use OneApp for admissions and require students to meet certain income requirements, while foreign language immersion schools frequently have language proficiency requirements for certain grade levels. According to LDE, applicants can maximize their chances of being admitted into a school during the first round by listing as many schools as allowed on their application.

The majority (53.8%) of students attending a public school in Orleans parish for the 2018-2019 academic year will travel outside of their geographic zone.

Geographic zones were created by RSD and the Orleans Parish School Board as a way to divide the city by zip code.⁵ As shown in Exhibit 4, 65.5% of public schools that use OneApp give a priority to applicants who live in the school's geographic zone for a certain percent of all open seats. According to LDE, the purpose of geographic priority for elementary and middle schools is to allow families to have greater access to schools closer to home, while not completely closing access to families who may not live near their preferred school. Because there is more specialization and a fewer number of schools citywide at the high school level, geographic priority is generally not offered. The EnrollNOLA guide states that the reason the geographic priority only applies to a certain percentage of available seats—usually 50%—is to make sure that families who live farther away can also have an opportunity to attend. This allows a student to attend a school outside of their zone. According to LDE, 50% of all top-ranked choices were for schools that were outside of the applicant's zone of residence and two-thirds of choices on all applications were for out-of-zone schools.

⁵ According to EnrollNOLA staff, the zones were updated in 2016 to move to zip codes in order to make it easier for families to know into which zone they fall, and to maintain their relative size, ensuring that families would all receive priority to a range of schools and at least one open enrollment A or B school. The exception was New Orleans East, where there are currently no open enrollment elementary or middle schools rated an A or B in the OneApp.

We found that the majority of students attending a public school in Orleans parish for the 2018-2019 academic year will travel outside of their geographic zone. Specifically, 21,060 (46.2%) of 45,574⁶ students live in the same zone as their school and 24,514 (53.8%) live outside of their school's geographic zone based on first round OneApp results for the upcoming year.⁷ Exhibit 5 shows the average distance students will travel for each zone.

Exhibit 5				
Average Miles Students Will Travel for School*				
2018-2019 Academic Year				
Region	Zone	Average Miles Per Student Living in Zone**	% Students Attending School Outside Zone	% Students Attending School Within Zone
Downtown	1	2.6	59.0%	41.0%
Mid-City	2	2.5	66.2%	33.8%
Garden District	3	2.0	63.2%	36.8%
Uptown	4	2.4	47.4%	52.6%
Gentilly/Lakeview	5	3.1	67.5%	32.5%
New Orleans East	6	5.0	55.0%	45.0%
Westbank	7	2.9	32.3%	67.7%
Average		3.3 miles	53.8%	46.2%
*Based on first round OneApp results for the upcoming year.				
**This distance is calculated using the geodesic (straight-line) distance between the student's address and the school so driving distance may be longer depending on street grid and bus route.				
Source: Prepared by legislative auditor's staff using data obtained from the OneApp system.				

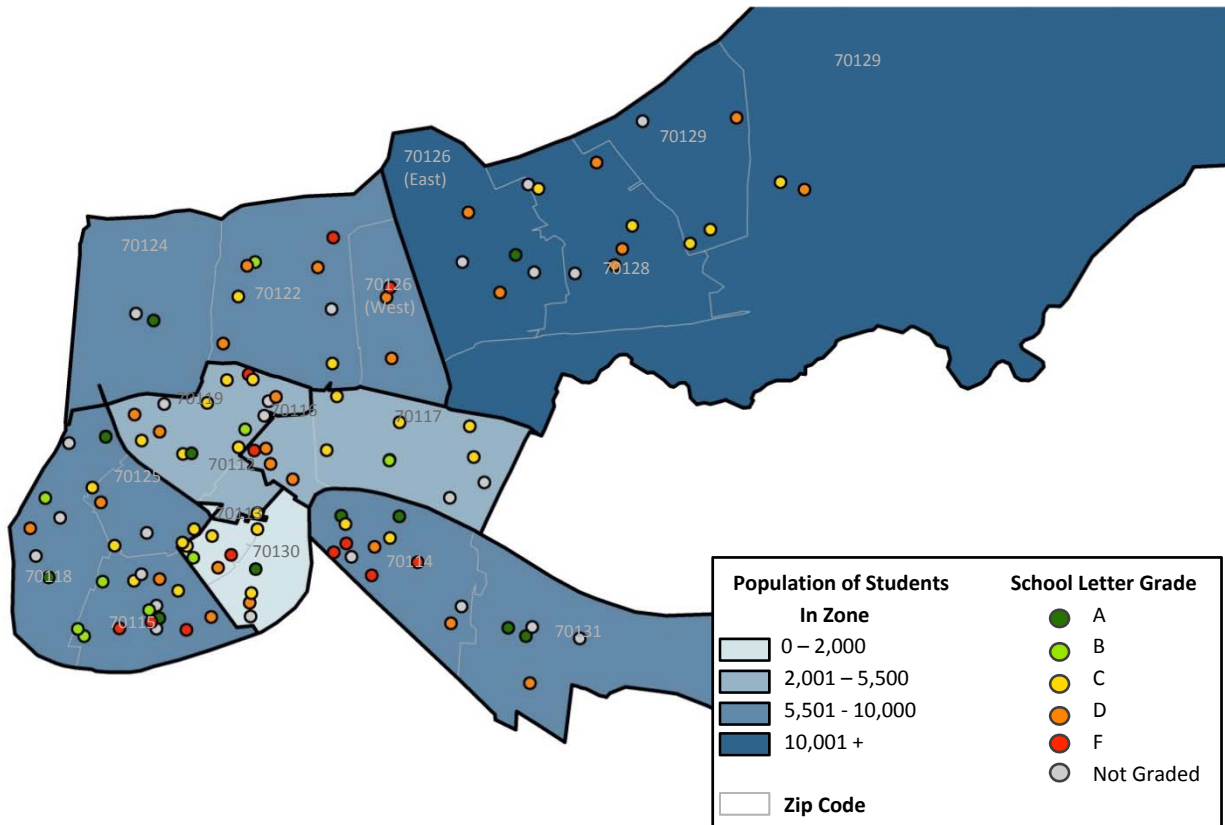
As shown in Exhibit 5, students in Zone 6 (New Orleans East) on average live the farthest away from their schools. These students have to travel an average of 5.0 miles compared to students in Zone 5 (Gentilly/Lakeview) who have to travel on average of 3.1 miles, the next highest average distance. As shown in Exhibit 6 on the next page, Zone 6 also has fewer schools per student than any other zone and has no elementary or middle open admission schools with a letter grade of A or B. In addition, Zone 6 has 664 students for every school compared to Zone 3 where there are 174 students for every school. Exhibit 7 shows a map of the zones and where schools are located (as depicted by dots on the map).

⁶ This number of students does not match the number of students listed on page 3 (49,195) because only Orleans Parish students are used in the geographic analysis, while students from any area of the state may apply to the Type 2 charter schools included in the OneApp.

⁷ This is based on round one OneApp data for the upcoming 2018-2019 academic year and not enrollment data. This is also based on all schools in the OneApp, not only those that actually use geographic preference for admissions.

Exhibit 6 Students per Zone* 2018-2019 Academic Year				
Region	Zone	No. of Students**	No. of Schools***	No. of Students Per School
Downtown	1	5,020	13	1 school for every 386 students
Mid-City	2	5,391	16	1 school for every 337 students
Garden District	3	1,743	10	1 school for every 174 students
Uptown	4	6,432	25	1 school for every 257 students
Gentilly/Lakeview	5	7,072	13	1 school for every 544 students
New Orleans East	6	12,621	19	1 school for every 664 students
Westbank	7	8,384	17	1 school for every 493 students
<p>*Based on first round OneApp results for the upcoming year.</p> <p>**The number of students includes only those that participated in the OneApp enrollment process for the 2018-2019 academic year, excluding students who live outside of Orleans Parish, applying to statewide type 2 charter schools.</p> <p>***The number of schools does not include the five schools located in Orleans Parish that do not participate in the OneApp, but does include four schools that have locations in multiple zones (and are, therefore, counted twice) and scholarship schools. We included the scholarship and multi-campus schools to ensure we included all school options each student had within their zone through the OneApp system.</p> <p>Source: Prepared by legislative auditor's staff using data obtained from the OneApp system.</p>				

Exhibit 7
Map of Zones and Number of OneApp Schools and Students in Each Zone
2018-2019 Academic Year



Zone	Zip Codes	Number of Schools	Population of Students
1	70116, 70117	13	5,020
2	70112, 70119	16	5,391
3	70113, 70130	10	1,743
4	70115, 70118, 70125	25	6,432
5	70122, 70124, 70126 (West)	13	7,072
6	70126 (East), 70127, 70128, 70129	19	12,621
7	70114, 70131	17	8,384

*The number of schools does not include the five schools located in Orleans Parish that do not participate in the OneApp, but does include four schools that have locations in multiple zones (and are, therefore, counted twice) and scholarship schools. The number of students includes only those that participated in the OneApp enrollment process for the 2018-2019 academic year. We included the scholarship and multi-campus schools to ensure we included all school options each student had within their zone through the OneApp system, whether or not the school offers geographic priority.

Source: Prepared by legislative auditor staff using ArcGIS and data obtained from the OneApp system.

APPENDIX A: SCOPE AND METHODOLOGY

We conducted this performance audit under the provisions of Title 24 of the Louisiana Revised Statutes of 1950, as amended. Our review evaluated the unified enrollment system, which is referred to as OneApp, in Orleans parish and covered the time period of academic year 2014-2015 through academic year 2018-2019. The objective of this review was:

To analyze the placement of students participating in the unified enrollment system (OneApp) in Orleans Parish.

The methodology used in preparing this report was developed uniquely to address the stated objective; therefore, this report is more limited in scope than an audit performed in accordance with *Government Auditing Standards* issued by the Comptroller General of the United States. To answer our objective, we reviewed internal controls relevant to the audit objective and performed the following audit steps:

- Researched and reviewed relevant state statutes and regulations related to OneApp.
- Interviewed EnrollNOLA staff regarding the processes of OneApp and how enrollment zones were determined.
- Obtained and reviewed a data verification audit conducted by an external consultant (TEMBO) in 2016. This audit found that “OneApp participants received fair and definitive school assignments aligned to the intended functioning of the OneApp system.”
- Obtained OneApp data from LDE for academic years 2014-2015 through 2018-2019 and calculated placement statistics.
- Using the OneApp data, calculated the number of applicants who applied and were eligible for at least one school for academic years 2014-2015 through 2018-2019 and classified on whether they were new applicants, returning applicants, or transferring applicants. The total number of applicants includes applicants applying for scholarship schools. If a transfer student received one of their top three choices by default because they listed fewer than three choices and as a result received their current school, they were excluded from the percentage of transfer students who received one of their top three choices in our analysis.
- Used the EnrollNola’s Spring 2018 School Guide to determine the number of schools participating in OneApp for the 2018-2019 academic year.

- Obtained student and school address data from the 2018-2019 OneApp data and calculated the average distance students will have to travel to school using ArcGIS and Excel computer software based on first round results. The number of students for the distance analysis did not include the students applying to a Type 2 charter school located within Orleans Parish who live outside of the parish and did not include the students who did not receive a placement during the first round of the application period for the 2018-2019 academic year.
- Obtained the zip codes for each geographic zone from EnrollNola's Spring 2018 School Guide and calculated how many students and schools are within each zone, which was based on first round OneApp applicant data for the 2018-2019 academic year. The number of students for the geographic zone analysis did not include the students applying to a Type 2 charter school located within Orleans Parish who live outside of the parish. However, there is a possibility that not all students will attend the school in which they were accepted. Families are afforded the opportunity to transfer throughout the summer until October 1. In addition, the schools included in this analysis do not include the schools that did not participate in OneApp for this academic year.
- To determine the letter grades for scholarship schools, we used the schools 2017 scholarship cohort index and applied the public school performance score letter grade scoring criteria to this index.
- Discussed our results with LDE and EnrollNOLA employees and provided them with the results of our data analyses.

APPENDIX B: ROUND ONE KINDERGARTEN ONEAPP PLACEMENTS 2018-2019 ACADEMIC YEAR

	Seats Available	Number of Eligible Applications	Returning Students		Sibling Priority		Geographic Priority		Feeder School Priority		IEP Priority		Economically Disadvantaged Priority		Other Priority		No Priority	
Edward Hynes Charter School	81	1065	12	14.8%	42	51.9%	17	21.0%	0	0.0%	0	0.0%	0	0.0%	0	0.0%	10	12.3%
General	54	757	0	0.0%	35	64.8%	13	24.1%	0	0.0%	0	0.0%	0	0.0%	0	0.0%	6	11.1%
French Immersion	27	308	12	44.4%	7	25.9%	4	14.8%	0	0.0%	0	0.0%	0	0.0%	0	0.0%	4	14.8%
International School of Louisiana: Eagle and Camp Campuses	150	764	0	0.0%	28	18.7%	0	0.0%	0	0.0%	10	6.7%	54	36.0%	0	0.0%	58	38.7%
Spanish Immersion	75	424	0	0.0%	21	28.0%	0	0.0%	0	0.0%	6	8.0%	38	50.7%	0	0.0%	10	13.3%
French Immersion	75	340	0	0.0%	7	9.3%	0	0.0%	0	0.0%	4	5.3%	16	21.3%	0	0.0%	48	64.0%
Benjamin Franklin Elementary Mathematics and Science School	92	650	24	26.1%	12	13.0%	29	31.5%	0	0.0%	0	0.0%	0	0.0%	0	0.0%	23	25.0%
General	85	642	21	24.7%	12	14.1%	29	34.1%	0	0.0%	0	0.0%	0	0.0%	0	0.0%	23	27.1%
Gifted & Talented	7	8	3	42.9%	0	0.0%	0	0.0%	0	0.0%	0	0.0%	0	0.0%	0	0.0%	0	0.0%

	Seats Available	Number of Eligible Applications	Returning Students		Sibling Priority		Geographic Priority		Feeder School Priority		IEP Priority		Economically Disadvantaged Priority		Other Priority		No Priority	
Bricolage Academy	90	577	0	0.0%	24	26.7%	37	41.1%	0	0.0%	0	0.0%	13	14.4%	0	0.0%	16	17.8%
Audubon Gentilly	45	484	0	0.0%	0	0.0%	22	48.9%	0	0.0%	0	0.0%	0	0.0%	0	0.0%	23	51.1%
Lycee Francais de la Nouvelle-Orleans (LFNO)	145	453	38	26.2%	27	18.6%	0	0.0%	0	0.0%	9	6.2%	34	23.4%	0	0.0%	37	25.5%
Alice Harte Elementary School	84	452	39	46.4%	14	16.7%	17	20.2%	0	0.0%	0	0.0%	0	0.0%	0	0.0%	14	16.7%
Audubon Charter School Uptown	104	400	58	55.8%	10	9.6%	0	0.0%	0	0.0%	0	0.0%	0	0.0%	13	12.5%	23	22.1%
Montessori Program	52	208	19	36.5%	5	9.6%	0	0.0%	0	0.0%	0	0.0%	0	0.0%	6	11.5%	22	42.3%
French Immersion	52	192	39	75.0%	5	9.6%	0	0.0%	0	0.0%	0	0.0%	0	0.0%	7	13.5%	1	1.9%
Morris Jeff Community School	85	359	66	77.6%	11	12.9%	5	5.9%	0	0.0%	0	0.0%	0	0.0%	0	0.0%	3	3.5%
Mary Bethune Elementary Literature/Technology	85	301	71	83.5%	8	9.4%	3	3.5%	0	0.0%	0	0.0%	0	0.0%	0	0.0%	3	3.5%
International School of Louisiana: Olivier Street Campus (Spanish)	75	254	0	0.0%	11	14.7%	0	0.0%	0	0.0%	6	8.0%	27	36.0%	0	0.0%	31	41.3%
Dr. Martin Luther King Jr. Charter School	100	237	64	64.0%	5	5.0%	10	10.0%	0	0.0%	0	0.0%	0	0.0%	0	0.0%	11	11.0%

	Seats Available	Number of Eligible Applications	Returning Students		Sibling Priority		Geographic Priority		Feeder School Priority		IEP Priority		Economically Disadvantaged Priority		Other Priority		No Priority	
Cypress Academy	58	214	0	0.0%	8	13.8%	2	3.4%	0	0.0%	0	0.0%	0	0.0%	0	0.0%	48	82.8%
Lafayette Academy Charter School: Carrollton Campus	90	210	36	40.0%	11	12.2%	15	16.7%	0	0.0%	0	0.0%	0	0.0%	0	0.0%	7	7.8%
Martin Behrman Charter School Academy of Creative Arts and Sciences	94	186	54	57.4%	4	4.3%	16	17.0%	0	0.0%	0	0.0%	0	0.0%	0	0.0%	14	14.9%
Einstein Charter School at Sherwood Forest	110	182	57	51.8%	4	3.6%	10	9.1%	1	0.9%	0	0.0%	0	0.0%	0	0.0%	7	6.4%
KIPP East Community	120	170	0	0.0%	18	15.0%	40	33.3%	0	0.0%	0	0.0%	0	0.0%	0	0.0%	19	15.8%
KIPP Central City	120	167	0	0.0%	29	24.2%	9	7.5%	0	0.0%	0	0.0%	0	0.0%	0	0.0%	26	21.7%
Andrew H. Wilson Charter School	85	160	40	47.1%	6	7.1%	5	5.9%	0	0.0%	0	0.0%	0	0.0%	0	0.0%	13	15.3%
FirstLine Schools: Arthur Ashe Charter School	106	157	0	0.0%	15	14.2%	14	13.2%	0	0.0%	0	0.0%	0	0.0%	0	0.0%	19	17.9%
Fannie C. Williams Charter School	97	154	35	36.1%	3	3.1%	9	9.3%	0	0.0%	0	0.0%	0	0.0%	0	0.0%	3	3.1%

	Seats Available	Number of Eligible Applications	Returning Students		Sibling Priority		Geographic Priority		Feeder School Priority		IEP Priority		Economically Disadvantaged Priority		Other Priority		No Priority	
Akili Academy of New Orleans	54	154	19	35.2%	6	11.1%	9	16.7%	0	0.0%	0	0.0%	0	0.0%	0	0.0%	11	20.4%
KIPP Morial (McDonogh 15)	120	148	0	0.0%	16	13.3%	25	20.8%	0	0.0%	0	0.0%	0	0.0%	0	0.0%	17	14.2%
KIPP Believe	92	144	0	0.0%	12	13.0%	5	5.4%	0	0.0%	0	0.0%	0	0.0%	0	0.0%	19	20.7%
FirstLine Schools: Phillis Wheatley Community School	107	142	33	30.8%	12	11.2%	9	8.4%	0	0.0%	0	0.0%	0	0.0%	0	0.0%	10	9.3%
FirstLine Schools: Langston Hughes Academy	106	133	35	33.0%	4	3.8%	4	3.8%	0	0.0%	0	0.0%	0	0.0%	0	0.0%	9	8.5%
Encore Academy	62	131	38	61.3%	4	6.5%	2	3.2%	0	0.0%	0	0.0%	0	0.0%	0	0.0%	3	4.8%
Esperanza Charter School	60	131	0	0.0%	8	13.3%	4	6.7%	0	0.0%	0	0.0%	0	0.0%	0	0.0%	19	31.7%
Crocker College Prep: A School for the Arts and Technology	60	125	37	61.7%	3	5.0%	6	10.0%	0	0.0%	0	0.0%	0	0.0%	0	0.0%	9	15.0%
Paul Habans Charter School	76	123	54	71.1%	7	9.2%	4	5.3%	0	0.0%	0	0.0%	0	0.0%	0	0.0%	4	5.3%
ReNEW Schaumburg Elementary	121	120	50	41.3%	0	0.0%	11	9.1%	0	0.0%	0	0.0%	0	0.0%	0	0.0%	1	0.8%

	Seats Available	Number of Eligible Applications	Returning Students		Sibling Priority		Geographic Priority		Feeder School Priority		IEP Priority		Economically Disadvantaged Priority		Other Priority		No Priority	
ReNEW Dolores T. Aaron Elementary	107	116	35	32.7%	3	2.8%	17	15.9%	10	9.3%	0	0.0%	0	0.0%	0	0.0%	5	4.7%
KIPP Leadership	120	114	0	0.0%	18	15.0%	19	15.8%	0	0.0%	0	0.0%	0	0.0%	0	0.0%	10	8.3%
Robert Russa Moton Charter School	55	107	35	63.6%	0	0.0%	10	18.2%	0	0.0%	0	0.0%	0	0.0%	0	0.0%	10	18.2%
Einstein Charter School at Village De L'est	90	105	33	36.7%	3	3.3%	8	8.9%	3	3.3%	0	0.0%	0	0.0%	0	0.0%	2	2.2%
Harriet Tubman Charter School	110	105	0	0.0%	5	4.5%	12	10.9%	10	9.1%	0	0.0%	0	0.0%	0	0.0%	4	3.6%
James M. Singleton Charter School	43	105	34	79.1%	2	4.7%	1	2.3%	0	0.0%	0	0.0%	0	0.0%	0	0.0%	6	14.0%
Dwight D. Eisenhower Academy of Global Studies	84	104	19	22.6%	8	9.5%	16	19.0%	0	0.0%	0	0.0%	0	0.0%	0	0.0%	2	2.4%
FirstLine Schools: Samuel J Green Charter School	70	103	17	24.3%	2	2.9%	8	11.4%	0	0.0%	0	0.0%	0	0.0%	0	0.0%	6	8.6%
ReNEW SciTech Academy	122	101	34	27.9%	4	3.3%	2	1.6%	6	4.9%	0	0.0%	0	0.0%	0	0.0%	5	4.1%
ARISE Academy	60	100	0	0.0%	7	11.7%	6	10.0%	0	0.0%	0	0.0%	0	0.0%	0	0.0%	6	10.0%

	Seats Available	Number of Eligible Applications	Returning Students		Sibling Priority		Geographic Priority		Feeder School Priority		IEP Priority		Economically Disadvantaged Priority		Other Priority		No Priority	
Homer A. Plessy Community School	50	100	26	52.0%	1	2.0%	2	4.0%	6	12.0%	0	0.0%	0	0.0%	0	0.0%	6	12.0%
Pierre A. Capdau Charter School	75	92	19	25.3%	6	8.0%	3	4.0%	6	8.0%	0	0.0%	0	0.0%	0	0.0%	3	4.0%
Medard H. Nelson Charter School	40	90	27	67.5%	3	7.5%	2	5.0%	0	0.0%	0	0.0%	0	0.0%	0	0.0%	2	5.0%
ReNEW Cultural Arts Academy	70	87	42	60.0%	1	1.4%	1	1.4%	0	0.0%	0	0.0%	0	0.0%	0	0.0%	1	1.4%
Joseph A. Craig Charter School	68	84	33	48.5%	0	0.0%	1	1.5%	0	0.0%	0	0.0%	0	0.0%	0	0.0%	1	1.5%
St. Mary's Academy	60	81	0	-	2	3.3%	0	0.0%	0	0.0%	0	0.0%	0	0.0%	23	38.3%	12	20.0%
McDonogh #42 Elementary Charter School	60	78	19	31.7%	1	1.7%	2	3.3%	0	0.0%	0	0.0%	0	0.0%	0	0.0%	7	11.7%
Resurrection of Our Lord School	80	77	0	-	1	1.3%	3	3.8%	0	0.0%	0	0.0%	0	0.0%	48	60.0%	0	0.0%
E. P. Harney Spirit of Excellence Academy	65	72	0	0.0%	1	1.5%	2	3.1%	0	0.0%	0	0.0%	0	0.0%	0	0.0%	11	16.9%
McDonogh #32 Literacy Charter School	62	69	32	51.6%	1	1.6%	2	3.2%	0	0.0%	0	0.0%	0	0.0%	0	0.0%	0	0.0%

	Seats Available	Number of Eligible Applications	Returning Students		Sibling Priority		Geographic Priority		Feeder School Priority		IEP Priority		Economically Disadvantaged Priority		Other Priority		No Priority	
Mildred Osborne Charter School	62	69	0	0.0%	6	9.7%	4	6.5%	0	0.0%	0	0.0%	0	0.0%	0	0.0%	2	3.2%
St. Leo the Great	40	68	0	-	0	0.0%	3	7.5%	0	0.0%	0	0.0%	0	0.0%	17	42.5%	1	2.5%
William J. Fischer Accelerated Academy	78	67	17	21.8%	1	1.3%	1	1.3%	0	0.0%	0	0.0%	0	0.0%	0	0.0%	2	2.6%
Mary D. Coghill Elementary School	65	66	0	0.0%	6	9.2%	4	6.2%	0	0.0%	0	0.0%	0	0.0%	0	0.0%	4	6.2%
Foundation Preparatory Academy	60	64	0	0.0%	4	6.7%	2	3.3%	7	11.7%	0	0.0%	0	0.0%	0	0.0%	5	8.3%
Success Preparatory Academy	44	61	0	0.0%	6	13.6%	3	6.8%	5	11.4%	0	0.0%	0	0.0%	0	0.0%	1	2.3%
St. Joan of Arc	30	54	0	-	0	0.0%	0	0.0%	0	0.0%	0	0.0%	0	0.0%	18	60.0%	4	13.3%
St. Alphonsus School	50	49	0	-	0	0.0%	0	0.0%	0	0.0%	0	0.0%	0	0.0%	25	50.0%	2	4.0%
McMillian's First Steps CCDC	60	46	0	-	0	0.0%	0	0.0%	0	0.0%	0	0.0%	0	0.0%	28	46.7%	3	5.0%
Élan Academy	60	45	0	0.0%	2	3.3%	9	15.0%	0	0.0%	0	0.0%	0	0.0%	0	0.0%	3	5.0%
St. Rita School	24	44	0	-	1	4.2%	0	0.0%	0	0.0%	0	0.0%	0	0.0%	10	41.7%	3	12.5%
St. Stephen School	14	41	0	-	0	0.0%	0	0.0%	0	0.0%	0	0.0%	0	0.0%	5	35.7%	2	14.3%
St. Peter Claver School	4	34	0	-	0	0.0%	0	0.0%	0	0.0%	0	0.0%	0	0.0%	4	100.0%	0	0.0%

	Seats Available	Number of Eligible Applications	Returning Students		Sibling Priority		Geographic Priority		Feeder School Priority		IEP Priority		Economically Disadvantaged Priority		Other Priority		No Priority	
Noble Minds Institute for Whole Child Learning	45	34	0	0.0%	0	0.0%	0	0.0%	0	0.0%	0	0.0%	0	0.0%	0	0.0%	4	8.9%
St. Dominic School	1	29	0	-	0	0.0%	0	0.0%	0	0.0%	0	0.0%	0	0.0%	0	0.0%	1	100.0%
Lafayette Extension @ Paul L. Dunbar	56	29	0	0.0%	0	0.0%	5	8.9%	0	0.0%	0	0.0%	0	0.0%	0	0.0%	1	1.8%
Good Shepherd Nativity Mission School	50	29	0	-	3	6.0%	0	0.0%	0	0.0%	0	0.0%	0	0.0%	0	0.0%	8	16.0%
St. Benedict the Moor	17	27	0	-	0	0.0%	3	17.6%	0	0.0%	0	0.0%	0	0.0%	8	47.1%	0	0.0%
St. John Lutheran School	15	26	0	-	0	0.0%	0	0.0%	0	0.0%	0	0.0%	0	0.0%	0	0.0%	4	26.7%
Ecole Bilingue de la Nouvelle-Orleans	2	12	0	-	1	50.0%	0	0.0%	0	0.0%	0	0.0%	0	0.0%	0	0.0%	1	50.0%
Light City Christian Academy	5	9	0	-	1	20.0%	0	0.0%	0	0.0%	0	0.0%	0	0.0%	0	0.0%	1	20.0%
Kidz View Learning Academy	20	7	0	-	0	0.0%	0	0.0%	0	0.0%	0	0.0%	0	0.0%	0	0.0%	0	0.0%
New Orleans Adventist Academy	10	4	0	-	0	0.0%	0	0.0%	0	0.0%	0	0.0%	0	0.0%	0	0.0%	0	0.0%
Conquering Word Christian Academy Eastbank	0	1	0	-	0	-	0	-	0	-	0	-	0	-	0	-	0	-

	Seats Available	Number of Eligible Applications	Returning Students		Sibling Priority		Geographic Priority		Feeder School Priority		IEP Priority		Economically Disadvantaged Priority		Other Priority		No Priority	
			0	-	0	-	0	-	0	-	0	-	0	-	0	-	0	-
Life of Christ Christian Academy/Alternative	0	1	0	-	0	-	0	-	0	-	0	-	0	-	0	-	0	-
<p>Note: All percentages were calculated using total seats available, not new capacity as shown in Exhibit 3 on page 7 of the report. Also, hyphens indicate scholarship schools that do not include returning students in the available seat count.</p> <p>Source: Prepared by legislative auditor’s staff using data obtained from the OneApp system.</p>																		

APPENDIX C: ROUND ONE NINTH GRADE ONEAPP PLACEMENTS 2018-2019 ACADEMIC YEAR

	Seats Available	Number of Eligible Applications	Returning Students		Sibling Priority		Geographic Priority		Feeder School Priority		IEP Priority		Transition Status Priority		No Priority	
Warren Easton High School	274	3028	8	2.9%	105	38.3%	0	0.0%	0	0.0%	0	0.0%	0	0.0%	161	58.8%
General	193	2286	8	4.1%	97	50.3%	0	0.0%	0	0.0%	0	0.0%	0	0.0%	88	45.6%
Focus Program: Engineering, Law, and Health Sciences	81	742	0	0.0%	8	9.9%	0	0.0%	0	0.0%	0	0.0%	0	0.0%	73	90.1%
Edna Karr High School	285	2030	0	0.0%	74	26.0%	75	26.3%	73	25.6%	0	0.0%	0	0.0%	63	22.1%
Eleanor McMain Secondary School	280	1290	48	17.1%	23	8.2%	0	0.0%	25	8.9%	0	0.0%	0	0.0%	184	65.7%
KIPP Renaissance High School	210	961	7	3.3%	15	7.1%	0	0.0%	143	68.1%	0	0.0%	0	0.0%	45	21.4%
CA: Abramson Sci Academy	195	856	20	10.3%	32	16.4%	0	0.0%	0	0.0%	0	0.0%	0	0.0%	143	73.3%
New Orleans Charter Science and Math High School (Sci High)	165	848	1	0.6%	12	7.3%	0	0.0%	0	0.0%	0	0.0%	0	0.0%	152	92.1%
Sophie B. Wright Charter School	175	773	1	0.6%	10	5.7%	0	0.0%	0	0.0%	0	0.0%	0	0.0%	128	73.1%
International High School	165	736	33	20.0%	10	6.1%	0	0.0%	0	0.0%	11	6.7%	0	0.0%	111	67.3%
CA: Livingston Collegiate Academy	195	728	20	10.3%	15	7.7%	0	0.0%	0	0.0%	0	0.0%	0	0.0%	160	82.1%

	Seats Available	Number of Eligible Applications	Returning Students		Sibling Priority		Geographic Priority		Feeder School Priority		IEP Priority		Transition Status Priority		No Priority	
L. B. Landry - O. Perry Walker College and Career Preparatory High School	250	663	2	0.8%	35	14.0%	0	0.0%	0	0.0%	0	0.0%	0	0.0%	179	71.6%
CA: G.W. Carver High School	260	649	34	13.1%	21	8.1%	0	0.0%	0	0.0%	0	0.0%	0	0.0%	121	46.5%
KIPP Booker T. Washington High School	150	603	3	2.0%	3	2.0%	0	0.0%	106	70.7%	0	0.0%	0	0.0%	38	25.3%
John F. Kennedy High School at Lake Area	232	554	2	0.9%	9	3.9%	0	0.0%	34	14.7%	0	0.0%	0	0.0%	72	31.0%
Dr. Martin Luther King Jr. Charter School	200	427	28	14.0%	7	3.5%	0	0.0%	0	0.0%	0	0.0%	0	0.0%	32	16.0%
Morris Jeff Community School	130	374	72	55.4%	1	0.8%	0	0.0%	0	0.0%	0	0.0%	0	0.0%	52	40.0%
CA: Rosenwald Collegiate Academy	230	370	0	0.0%	0	0.0%	0	0.0%	0	0.0%	0	0.0%	0	0.0%	133	57.8%
Walter L. Cohen College Prep	175	297	0	0.0%	5	2.9%	0	0.0%	0	0.0%	0	0.0%	0	0.0%	22	12.6%
Einstein Charter High School at Sarah Towles Reed	180	284	1	0.6%	1	0.6%	0	0.0%	22	12.2%	0	0.0%	0	0.0%	18	10.0%
New Orleans Military and Maritime Academy	220	226	8	3.6%	22	10.0%	0	0.0%	0	0.0%	0	0.0%	0	0.0%	178	80.9%
Rooted School	75	140	0	0.0%	2	2.7%	0	0.0%	0	0.0%	0	0.0%	0	0.0%	35	46.7%
New Harmony High	60	124	0	0.0%	0	0.0%	0	0.0%	0	0.0%	0	0.0%	0	0.0%	37	61.7%

	Seats Available	Number of Eligible Applications	Returning Students		Sibling Priority		Geographic Priority		Feeder School Priority		IEP Priority		Transition Status Priority		No Priority	
The NET Charter High School: Gentilly	75	92	1	1.3%	1	1.3%	0	0.0%	0	0.0%	0	0.0%	0	0.0%	12	16.0%
Crescent Leadership Academy Accelerated	19	75	0	0.0%	0	0.0%	0	0.0%	0	0.0%	0	0.0%	0	0.0%	2	10.5%
JCFA - Algiers Campus	33	50	8	24.2%	0	0.0%	0	0.0%	0	0.0%	0	0.0%	0	0.0%	3	9.1%
The NET Charter High School: Central City	60	41	0	0.0%	0	0.0%	0	0.0%	0	0.0%	0	0.0%	0	0.0%	4	6.7%
ReNEW Accelerated High School	200	17	0	0.0%	0	0.0%	0	0.0%	0	0.0%	0	0.0%	0	0.0%	4	2.0%
St. Mary's Academy	0	11	10	-	0	-	0	-	0	-	0	-	0	-	0	-
New Orleans Adventist Academy	10	10	4	-	0	0.0%	0	0.0%	0	0.0%	0	0.0%	2	20.0%	0	0.0%
Bishop McManus School	0	7	7	-	0	-	0	-	0	-	0	-	0	-	0	-
Light City Christian Academy	0	2	2	-	0	-	0	-	0	-	0	-	0	-	0	-
Holy Rosary High School	0	1	1	-	0	-	0	-	0	-	0	-	0	-	0	-
Conquering Word Christian Academy Eastbank	0	1	0	-	0	-	0	-	0	-	0	-	0	-	0	-

Note: All percentages were calculated using total seats available, not new capacity as shown in Exhibit 3 on page 7 of the report. Also, hyphens indicate scholarship schools that do not include returning students in the available seat count.

Source: Prepared by legislative auditor’s staff using data obtained from the OneApp system.